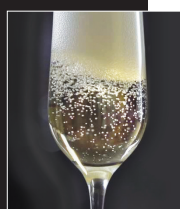




Wines



CHAMPAGNE / SPARKLING

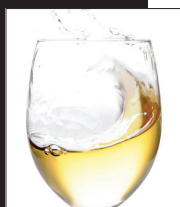
- MOET & CHANDON IMPERIAL BRUT NV, Epernay, France | 75
- GH MUMM BRUT CORDON ROUGE NV, Champagne, France | 86
- PIPER HEIDSIECK CUVÉE BRUT NV, Reims, France | 95
- PERRIER JOUET GRAND BRUT NV, Epernay, France | 100
- MOET & CHANDON IMPERIAL ROSE NV, Epernay, France | 105
- 2007 PERRIER JOUET BELLE ÉPOQUE, Epernay, France | 210



WHITE WINE

RIESLING / ROSE

- 2016 DR. L RIESLING, Germany | 41
- 2014 VOLRATZ RHEINGAU RIESLING QUALITÄTSWEIN DRY, Germany | 45
- 2016 WAGNER-STEMPEL RIESLING TROCKEN, Q.B.A., Germany | 50
- 2017 J K CARRIERE "GLASS" WHITE PINOT NOIR, Willamette Valley | 50



SAUVIGNON / GREAT WHITES

- 2015 CANTINA TOLLO PINOT GRIGIO, Italy | 37
- 2016 LOCATIONS CA, California | 38
- 2017 DUCKHORN SAUVIGNON BLANC, Napa, California | 51
- 2017 SANTA MARGHERITA PINOT GRIGIO, Alto Adige, Italy | 52
- 2014 GRGICH HILLS ESTATE FUME BLANC, Napa, California | 66
- 2015 CADE SAUVIGNON BLANC, Napa, California | 70
- 2017 CRAGGY RANGE SAUVIGNON BLANC, TE MUNA ROAD VINEYARD, Martinborough, NZ | 47
- 2017 GREYWACKE SAUVIGNON BLANC, Marlborough, NZ | 49



CHARDONNAY

- 2016 MICHAEL POZZAN, Russian River Valley | 45
- 2014 RUTHERFORD HILL, Napa, California | 46
- 2014 ALPHA OMEGA UN-OAKED, Napa, California | 69
- 2013 GARY FARRELL, Russian River Valley | 75
- 2016 BURGESS CHARDONNAY, Russian River Valley | 75
- 2014 GRGICH HILLS ESTATE, California | 80
- 2014 BERINGER, Napa, California | 90
- 2013 & 2014 FAR NIENTE ESTATE, Napa, California | 120



RED WINE

PINOT NOIR

- 2015 RITUAL, Casablanca, Chile | 46
- 2014 CHERRY HILL ESTATE | 56
- 2016 J K CARRIERE "PROVOCATEUR", Willamette Valley | 60
- 2016 DAVIS BYNUM, Russian River, California | 63
- 2014 SOKOL BLOSSER, Dundee Hills, Oregon | 70
- 2015 PENNER-ASH, Willamette Valley | 90
- 2015 PATZ & HALL, Sonoma, California | 95
- 2016 FLOWERS, Sonoma, California | 99



MERLOT

- 2014 RUTHERFORD HILL, Napa California | 50
- 2015 LUCENTE IGT, Tuscany, Italy | 65
- 2015 EMMOLO, Napa California | 65
- 2015 PRISONER WINE CO. THORN MERLOT, Napa Valley | 75



CABERNET SAUVIGNON

- 2015 JOEL GOTT, *California* | 45
2016 CULT, *Napa, California* | 50
2015 REVELATOR, FOLKWAY BORDEAUX STYLE BLEND, *California* | 54
2012 BENNETT LANE "MAXIMUS" RED FEASTING WINE, *Napa, California* | 79
2013 HONIG, *Napa, California* | 80
2013 BURGESS CABERNET, HOWELL MOUNTAIN, *Napa, California* | 81
2012 COHO, BORDEAUX BLEND, *California* | 90
2011 ALPHA OMEGA II RED WINE, *Napa, California* | 95
2016 FROGS LEAP CABERNET, *Rutherford, California* | 98
2016 FAUST, *Napa, California* | 99
2014 CHARLES KRUG GENERATIONS, ESTATE BOTTLED, *Napa, California* | 100
2014 ORIN SWIFT "PALERMO", *Napa Valley* | 101
2014 GRGICH HILLS ESTATE, *California* | 120
2013 CADE, *Howell Mountain, California* | 149



SYRAH / ZINFANDEL / GREAT REDS

- 2014 KLINKER BRICK SYRAH, *Lodi, California* | 39
2016 SOBON ESTATE "FIDDLETOWN" ZINFANDEL, *Amador County* | 40
2015 BORSAO TRES PICOS GARNACHA, *Campo de Borja, Spain* | 45
2017 K-OR MALBEC, *Cahors, France* | 49
2016 THE PESSIMIST, *Paso Robles, California* | 50
2016 FESS PARKER "BIG EASY" SYRAH, *Santa Barbara, California* | 60
2014 OWEN ROE CABERNET FRANC "ROSA MYSTICA,"
Yakima Valley, Washington | 65
2015 RIDGE ZINFANDEL, *Paso Robles, California* | 69
2011 GRGICH HILLS ESTATE ZINFANDEL, *California* | 70
2016 THE PRISONER BLEND, *Rutherford, California* | 95
2015 PENNER ASH SYRAH, *Willamette Valley, Oregon* | 95
2011 RENATO RATTI "MARCENASCO" BAROLO DOCG,
Piedmont, Italy | 99
2012 CATENA ALTA "HISTORIC ROWS" MALBEC, *Mendoza* | 105
2014 PLUMPJACK SYRAH, *Napa Valley* | 105

Rocco's

Reserve

2013 Cherry Pie Carneros Pinot Noir, *Napa California* | 99

Dark and intense fruit carries all through the palette, wisp of anise, blackberry honey, and golden pastry roasting in the oven...Cherry Pie.

2012 Domaine Faury Condrieu, *Cote-Rotie* | 110

Aromas of white flowers and jasmine open up to stone fruit flavors of ripe pear and tart peach supported by mineral notes and medium acidity.

2013 Patricia Green Estate Vineyard Etzel Block Pinot Noir, *Willamette Valley* | 100

Powerful, spice scented aromas of red and dark berries, floral tones and suggestions of licorice and wood smoke. Fresh raspberry and mulberry flavors with subtle tannins.

2014 Drouhin Roserock Zephirine Pinot Noir, *Eola-Amity Hills, Oregon* | 110

Zephirine conveys winemaker Veronique Drouhin's dedication to elegance and finesse. Blackberry and briary scents on the nose with a touch of earthiness. The medium-bodied palate features dusky blackberry and blueberry with a hint of white pepper hovering over the finish.

2011 Jarvis "Finch Hollow" Chardonnay, *Napa Valley* | 175

Aromas of coconut and caramel lead to lemon and apple flavors in this elegant wine from a remarkable harvest.

2012 Hollywood & Vine Cabernet "2480," *Napa Valley* | 185

This complex wine exhibits characteristics of some of the best vineyard locations in Napa Valley. Soft, juicy raspberry and blackberry notes from the benchland sites combine with firmer, more mocha/tobacco impressions of the hillsides.

2011 Silver Oak Cabernet Sauvignon, *Napa, California* | 200

Extraordinarily rich attack, a satin texture and exuberant expression of fruit, finishing with notions of a savory umami, and fruit with a medium tannic grip.

2012 & 2013 Odette Cabernet, *Stags Leap District, Napa* | 210

Black cherries, blueberry, black currant, graphite, mocha and lavender supported by silky, supple tannins showcase two spectacular vintages.

2012 Groth Reserve Cabernet Sauvignon, *Napa, California* | 225

Fabulous aromas of currents, blackberries and flowers. Licorice. Gorgeous to smell. Full-bodied, with racy tannins and smokey, spice and dark chocolate. Fresh and bright with a solid core of fruit.

2013 Plumpjack Cabernet, *Oakville, California* | 225

Full bodied flavors of blackberry, cassis, licorice, charcoal and camphor lead to a long and pure finish.

2012 & 2013 Far Niente Estate Cabernet Sauvignon, *Napa, California* | 265

Silky, leads to a juicy midpalate of red fruit and earthiness. Fine tannins carry a light briar note, lingering on an elegant finish.

2013 Quintessa, *Rutherford, Napa, California* | 295

Warm clove spice, saffras and a touch of vanilla complement nuances of toast to deliver a complex mix of flavors and texture in the mouth. Finishes long and satisfying with dark berry fruits, cassis and chocolate.